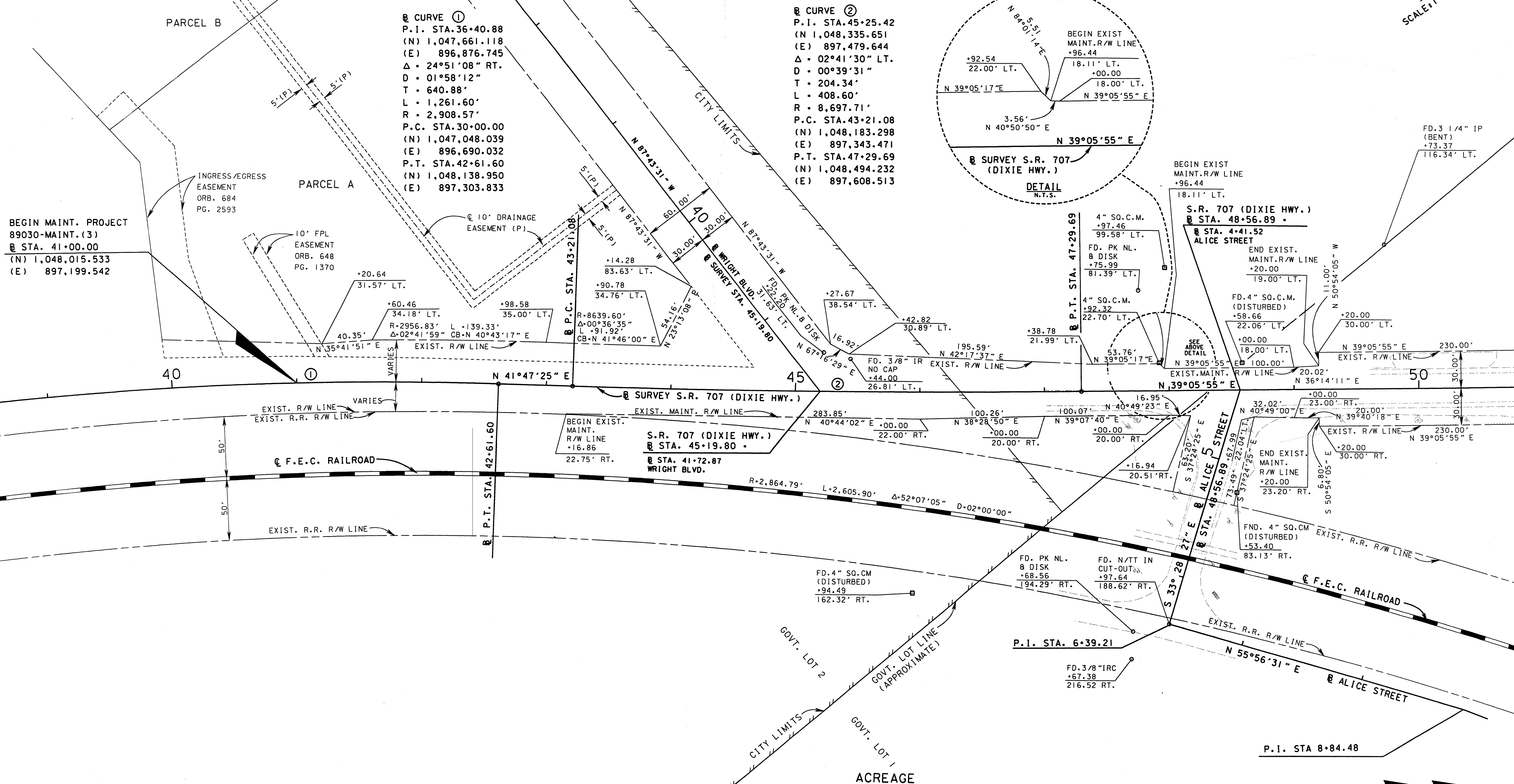


CITY OF STUART
NORTH SHORE PLAZA
P.B. 12, PG. 46

UNINCORPORATED MARTIN COUNTY
ACREAGE

SEC. 32, TWP. 37 S., RGE. 41 E.
SCALE 1" = 40'



SEE SHEET 1 FOR GENERAL NOTES, CERTIFICATIONS, LEGEND, ETC.

MAINTENANCE MAP

FLORIDA DEPARTMENT OF TRANSPORTATION
RIGHT OF WAY MAPPING

APPROVED BY
Jeffrey Smith
DATE 2/14/03

REVISION	BY	DATE	REVISION	BY	DATE

BY	DATE	FED. PROJ. NO.	N/A	SECTION 89030-MAINT.(3)
PRELIM L. CEFOLIA	5/17/02			
FINAL L. CEFOLIA	10/10/02			
CHECKED J. EDGAR	10/11/02			

STATE ROAD 707 (DIXIE HWY.)	MARTIN COUNTY	ITEM/SEGMENT NO. 4035911	SHEET 3 OF 6

TIMS: /RWMAPPING/89030-MAINT3/MMDETLO3.DGN